

# TIMBERWOOL WOOD FIBER ACOUSTIC PANELS

## DIRECT ATTACH INSTRUCTIONS

### RECEIVING AND HANDLING

Prior to unpacking, check the package for any obvious shipping damage. If no damage is present, move to a dry/controlled area and inspect it for dents, breakage, and other less noticeable damage (open the package). Any damage that is identified should be photographed and documented. Please contact us immediately!

### INSTALLATION TOOLS

- Saw (if cutting required)

### HOW TO INSTALL

Timberwool acoustic panels are designed to be installed on furring, plywood, or existing structure of sufficient thickness to support the product. Plan furring layout such that the panel joints land on furring. Once furring and any acoustical backer (optional) are properly installed, panels may be mechanically fastened to furring using the recommended screws with 24" O.C. max (12" O.C. max in high traffic areas or for ceilings).

For ceiling installations, a drywall T-grid may be used and still should be fastened using the recommended screws.



Timberwool should be treated like you're dealing with real wood. It's heavy and must be screwed in. Measure and cut Timberwool with standard wood tools, and then paint it to achieve your desired look!

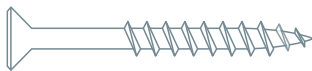
(CONTINUED ON NEXT PAGE)

## Screw Type Chart

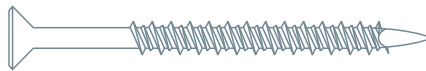
Panel Thickness	Substrate	Recommended Screw Type	Recommended Screw Length
1"	Hat channel or thin metal	Self-tapping	2"
1-3/8"	Hat channel or thin metal	Self-tapping	2-1/4"
2"	Hat channel or thin metal	Self-tapping	3"
1"	Wall board or wood furring	Drywall screw	1-5/8"
1-3/8"	Wall board or wood furring	Drywall screw	2-1/4"
2"	Wall board or wood furring	Drywall screw	3"
1"	Concrete	Tapcon	2-1/4"
1-3/8"	Concrete	Tapcon	2-3/4"
2"	Concrete	Tapcon	3-1/4"

## Screw Spacing Chart

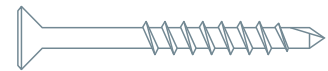
Application	Minimum O.C. Spacing	Minimum screw distance from edge of panel
Ceiling	12"	3/4"
Wall	24"	3/4"
Wall: High Traffic	12"	3/4"



#6 SHARP POINT DRYWALL SCREW RECOMMENDED FOR WOOD APPLICATION

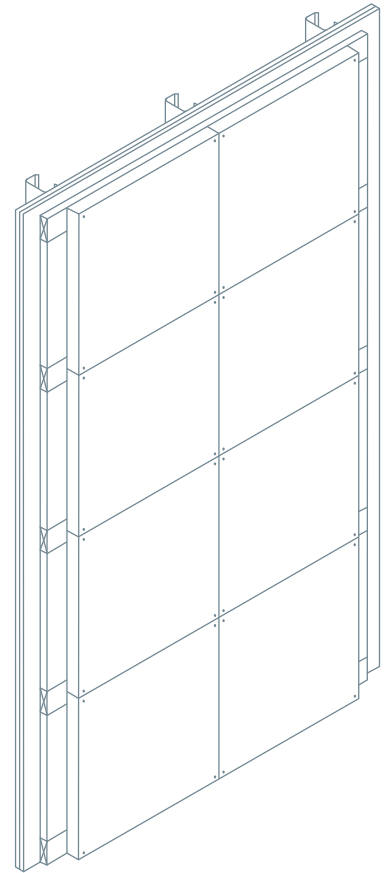
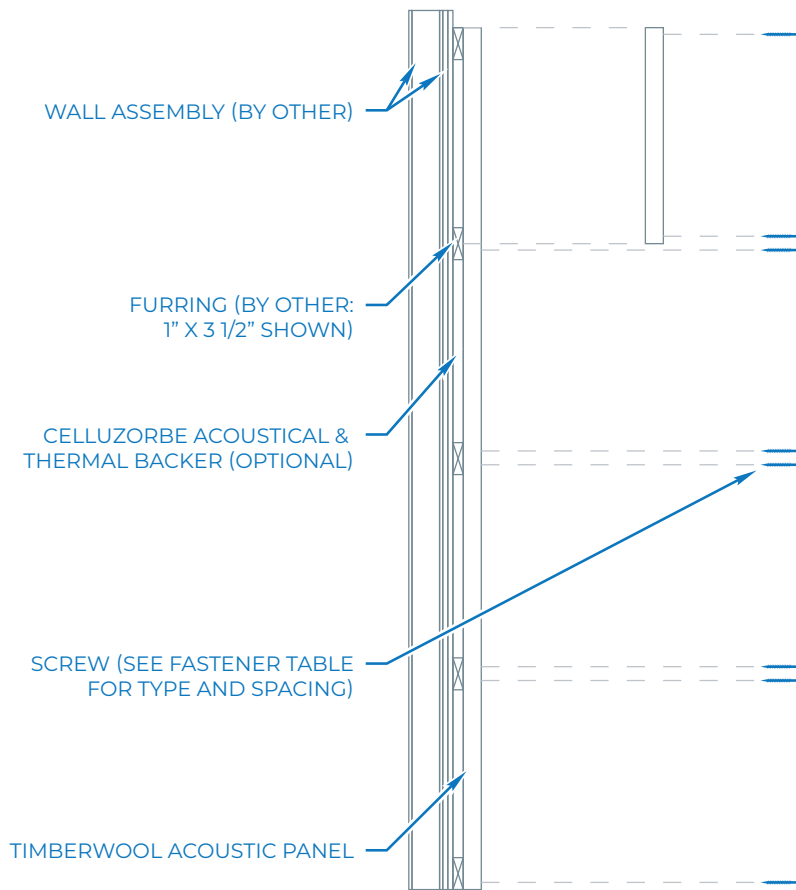


#6 SMU SCREW RECOMMENDED FOR MASONRY APPLICATION

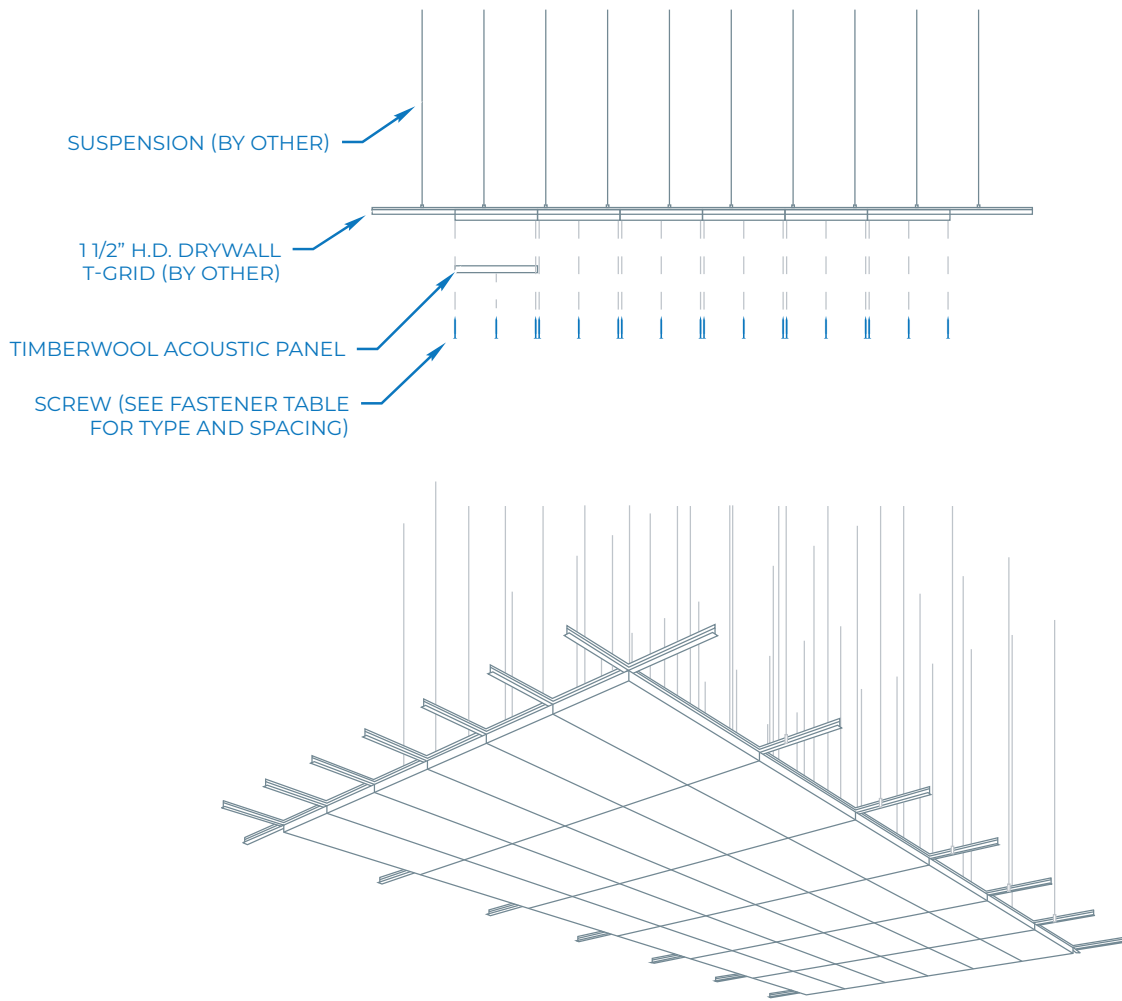


#6 SELF TAPPING SCREW RECOMMENDED FOR METAL APPLICATIONS

# WALL INSTALLATION



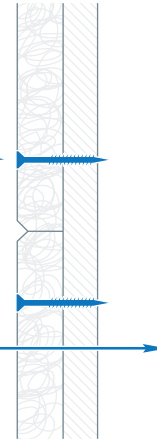
# CEILING INSTALLATION



# MOUNTING OPTIONS

SCREW (SEE FASTENER TABLE FOR TYPE AND SPACING)

WALL ASSEMBLY (BY OTHER)

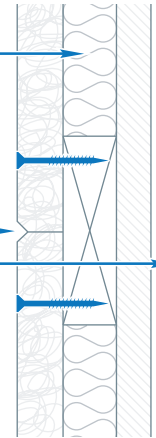


## MOUNTING OPTION 1

CELLUZORBE ACOUSTICAL & THERMAL BACKER (OPTIONAL)

SCREW (SEE FASTENER TABLE FOR TYPE AND SPACING)

FURRING (1" X 3 1/2" SHOWN) FASTENED TO WALL ASSEMBLY (FURRING, FASTENERS, AND WALL ASSEMBLY BY OTHER)

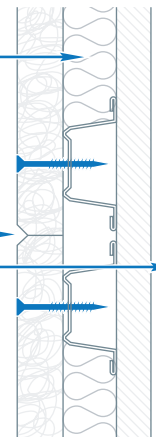


## MOUNTING OPTION 2

CELLUZORBE ACOUSTICAL & THERMAL BACKER (OPTIONAL)

SCREW (SEE FASTENER TABLE FOR TYPE AND SPACING)

HAT CHANNEL FASTENED TO WALL ASSEMBLY (CHANNEL, FASTENERS, AND WALL ASSEMBLY BY OTHER)



## MOUNTING OPTION 3