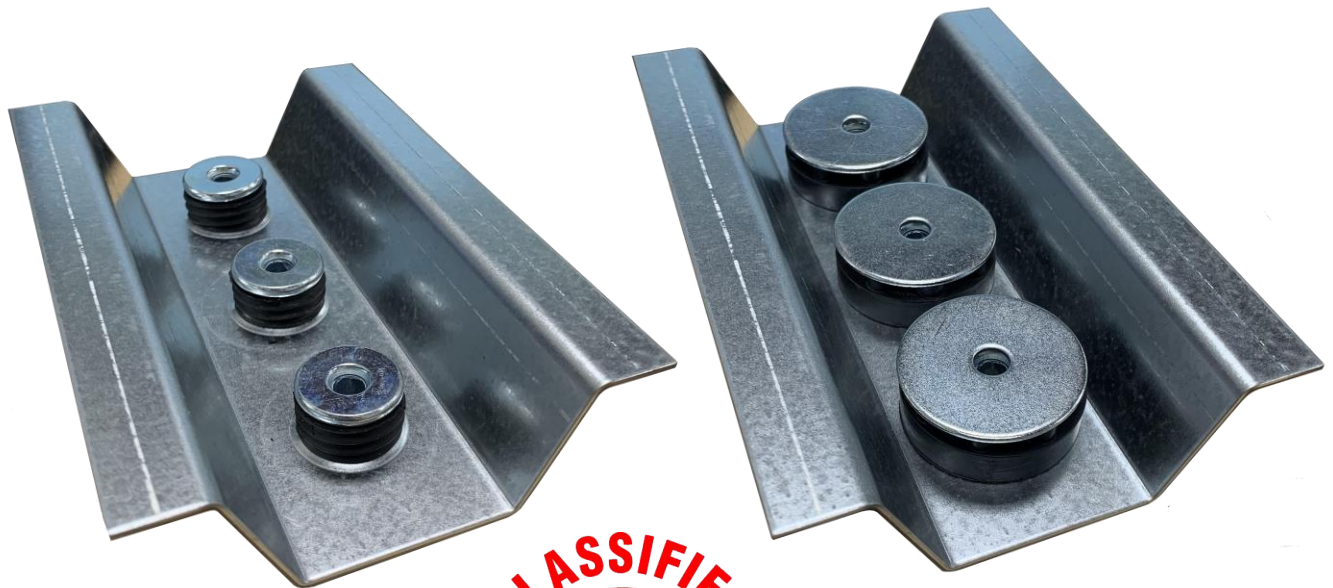


# RSIC-1-BACKER SOUND ISOLATION CLIP

## RSIC-1-BACKER INSTALLATION GUIDE

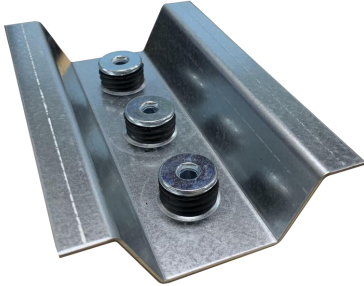
# RSIC-1 BACKER RSIC-1 BACKER HD/DD



For use in with the RSIC-1 clip

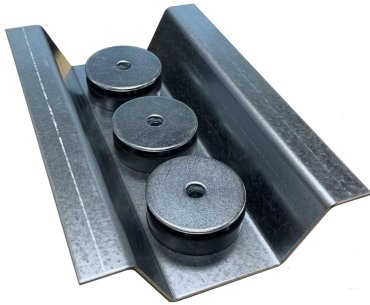
# RSIC-1 BACKER SOUND ISOLATION CLIP

## RSIC-1 BACKER INSTALLATION GUIDE



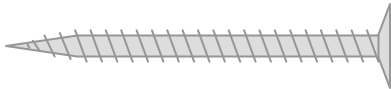
### **Resilient Sound Isolation Clip (RSIC-1 BACKER)**

- Spacing: maximum 48 inches on center
- Maximum acoustical design load:  
RSIC-1 BACKER 108 lbs  
RSIC-1 BACKER HD/DD 216 lbs
- RSIC-1 BACKER is designed for use with the RSIC-1 clip to support heavy loads

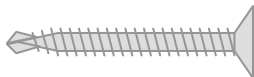


### **RSIC-1 BACKER dimensions:**

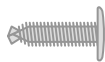
- RSIC-1 BACKER clip 4" wide
- RSIC-1 BACKER clip 6" long
- RSIC-1 BACKER clip 1-5/8" deep



2-1/2" min



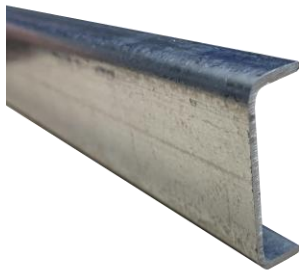
1-5/8" min



1/2" min

### **Fasteners:**

- RSIC-1 BACKER to wood: #8 x 2-1/2 inch min.
- RSIC-1 BACKER HD/DD to wood: #10 or #12 x 2-1/2 inch min.
- RSIC-1 BACKER to Steel: # 8 x 1-5/8 inch min.
- RSIC-1 BACKER HD/DD to Steel: #10 or #12 x 1-5/8 inch min.
- Steel Track to RSIC-1 Backer: 1/2" min. pan head self drilling framing screw
- DO NOT fasten Resilient Sound Isolation Clips to framing members with nails. Use only approved screws.



### **Steel Track:**

- Minimum requirements: 16 gauge Steel Track. Meets or exceeds SSMA min. requirements.
- Depth: 1-1/4 inch
- Width 6 inch wide.



### **Fire Test Information:**

RSIC-1® Backer and RSIC-1 Backer HD for use wall designs of the U300, U400, V300, V400, and W400 wall series. Call us for the latest updates of the fire testing approvals: **800-679-8511**

Check UL Fire Resistance Directory File # R16638

Check UL's web pages. [www.ul.com/database](http://www.ul.com/database)

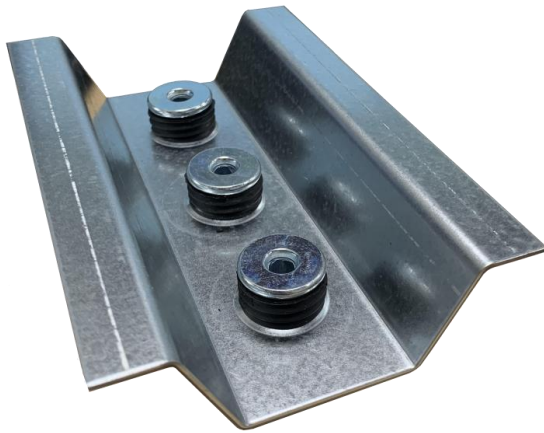
Contact UL (877) UL-HELPS

Second Skin Audio • Tel (800) 679-8511 • Email [service@secondskinaudio.com](mailto:service@secondskinaudio.com)

RSIC® is a registered Trade Mark

# RSIC-1 BACKER SOUND ISOLATION CLIP

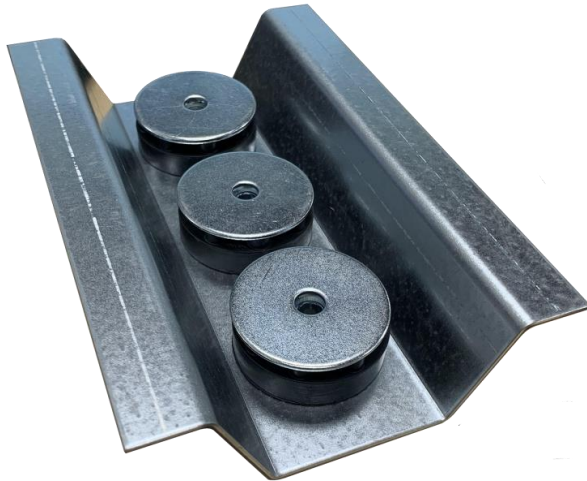
## RSIC-1 BACKER INSTALLATION GUIDE



### **RSIC-1 BACKER**

**108 Lb per isolator max load**

RSIC-1 BACKER Clip fastens to the wall framing adding support to the RSIC-1 clip wall system for supporting heavy loads.



### **RSIC-1 BACKER HD/DD**

**216 Lbs per isolator max load**

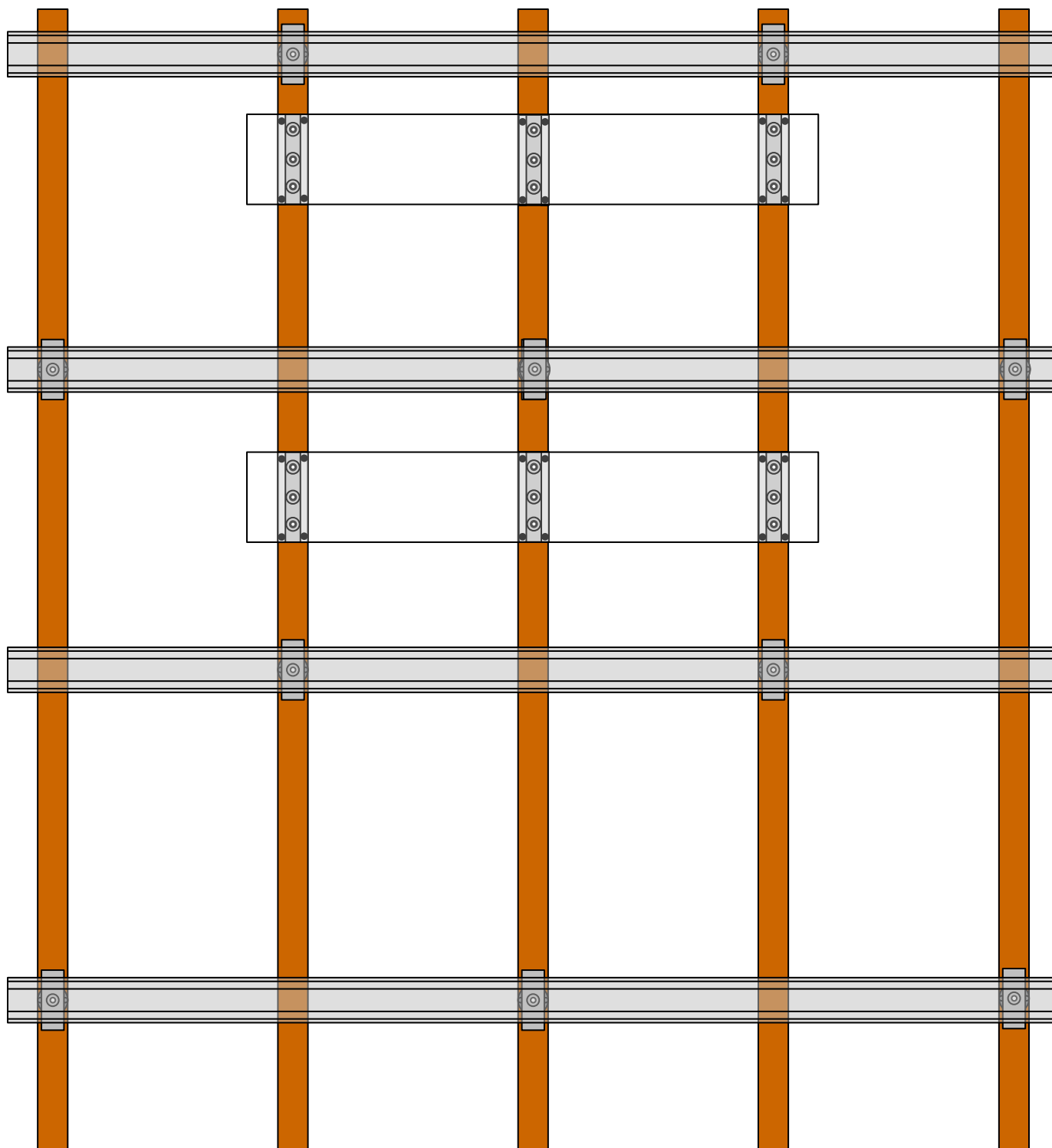
RSIC-1 BACKER HD/DD Clip fastens to the wall framing adding support to the RSIC-1 clip wall system for supporting heavy loads.

### **Walls:**

- Resilient Sound Isolation Clip (RSIC-1 BACKER) shall be on every stud
- Spacing not to be greater than 48 inches on center.
- Locate the areas where the additional support will be needed in the wall system. Make a note on the plans referencing the location of each RSIC-1 BACKER and the steel track for mounting the additional items to the wall after the gypsum board is installed.
- Fasten the Resilient Sound Isolation Clip (RSIC-1 BACKER) to the framing using a fastener ensuring all of the RSIC-1 BACKER clips are in the same horizontal plane
- Fasten the steel track to the RSIC-1 BACKER using 4 ea framing screws per RSIC-1 BACKER.

# RSIC-1 BACKER SOUND ISOLATION CLIP

## RSIC-1 BACKER INSTALLATION GUIDE



Second Skin Audio • Tel (800) 679-8511 • Email [service@secondskinaudio.com](mailto:service@secondskinaudio.com)

RSIC® is a registered Trade Mark

# RSIC-1 BACKER SOUND ISOLATION CLIP

## RSIC-1 BACKER INSTALLATION GUIDE

