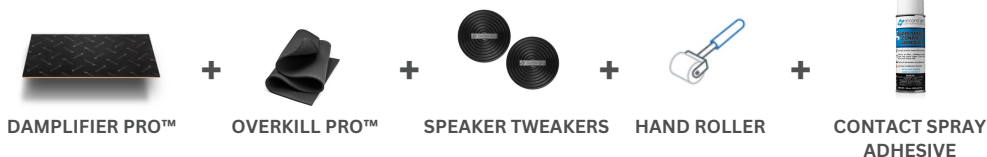


# CAR AUDIO DOOR KIT - OVERKILL PRO™

## RATTLING PLASTICS INSTALLATION INSTRUCTIONS

### WHAT COMES IN THE KIT?



### INSTALLATION TOOLS



### HOW TO INSTALL ([Watch Install Video](#))

- 1 Remove your door panels such that the **bare sheet metal** is exposed.

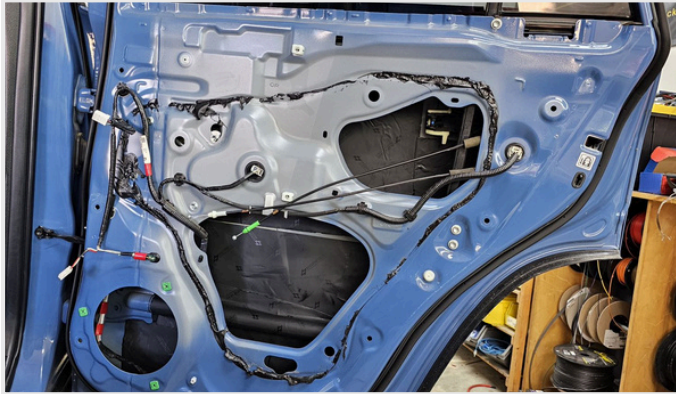


( CONTINUED ON NEXT PAGE )

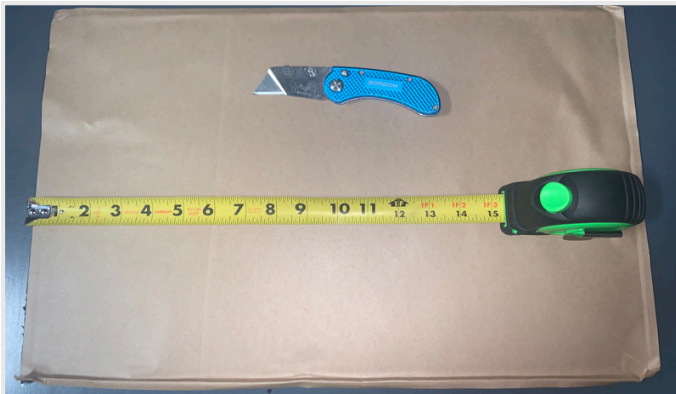
## CAR AUDIO DOOR KIT - OVERKILL PRO™

### RATTLING PLASTICS INSTALLATION INSTRUCTIONS

- 2 Clean the bare sheet metal to **remove any dirt, oils, and waxy substances** for better material adherence.



- 3 Measure and cut Dampplier Pro™ mats with a utility knife to fit. Use a cardboard template if desired. We recommend **60% coverage** on outer skin and **40% coverage** on inner skin (avoid mechanical and/or electrical components).



( CONTINUED ON NEXT PAGE )

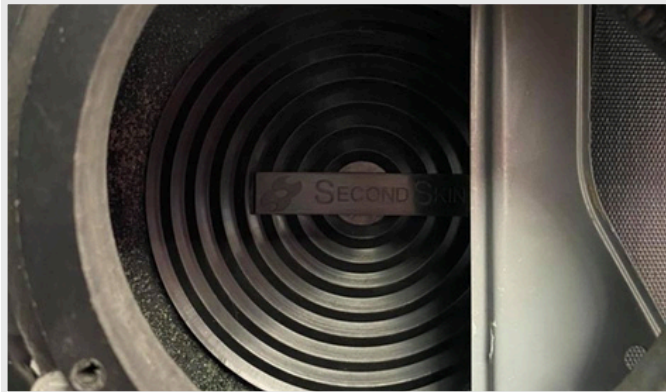
## CAR AUDIO DOOR KIT - OVERKILL PRO™

### RATTLING PLASTICS INSTALLATION INSTRUCTIONS

- 4 Peel the adhesive backing from the Damplifier Pro™ Mats and **press them firmly** with as much pressure and coverage as practical across the **entire bare sheet metal**. Roll over the mats with the **wooden hand roller** to remove air bubbles and **bond** the material to the **substrate**.



- 5 Use **super glue** or **Double Sided Tape** to attach the Speaker Tweakers **directly behind** each speaker on top of the **Damplifier Pro™**.

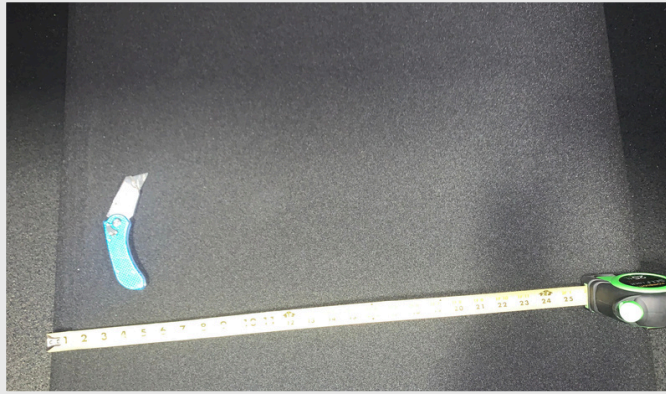


( CONTINUED ON NEXT PAGE )

## CAR AUDIO DOOR KIT - OVERKILL PRO™

### RATTLING PLASTICS INSTALLATION INSTRUCTIONS

- 6 Measure and cut the OverKill Pro™ to size. Use a **cardboard template** if desired.



- 7 Peel and stick the OverKill Pro™ with **100% coverage** across your door panels. The closed cell foam fills the gap between the plastic panels and the inner door skin to create a **"snug" fit and isolate the plastic from the metal.**



( CONTINUED ON NEXT PAGE )

## CAR AUDIO DOOR KIT - OVERKILL PRO™

### RATTLING PLASTICS INSTALLATION INSTRUCTIONS

- 8 Reattach your door panels and **enjoy better car audio!**



# CAR DOOR OVERKILL PRO™ INSTALL GUIDE