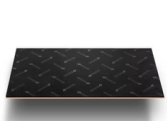


CAR AUDIO DOOR KIT - MEGA ZORBETM

SOUND REDUCTION AND DOOR ACOUSTICS INSTALLATION INSTRUCTIONS

WHAT COMES IN THE KIT?



DAMPLIFIER PRO™

+



MEGA ZORBETM
(PEEL & STICK)

+



SPEAKER TWEAKERS

+



HAND ROLLER

INSTALLATION TOOLS

1



SHARP UTILITY
KNIFE

2



GLOVES

3



ALCOHOL

4



MEASURING
TAPE

5



SUPER GLUE OR
DOUBLE SIDED TAPE

HOW TO INSTALL ([Watch Install Video](#))

- 1 Remove your door panels such that the **bare sheet metal** is exposed.

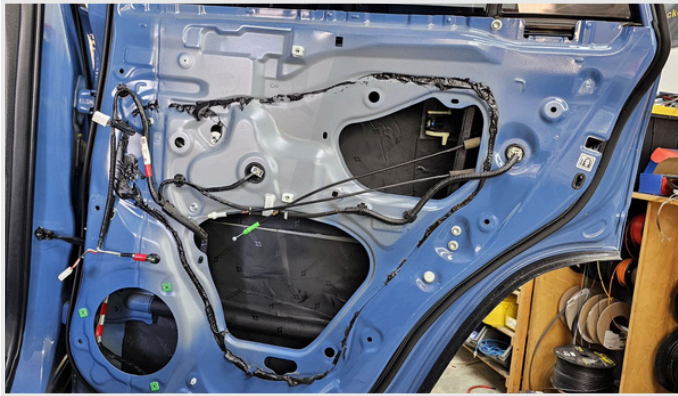


(CONTINUED ON NEXT PAGE)

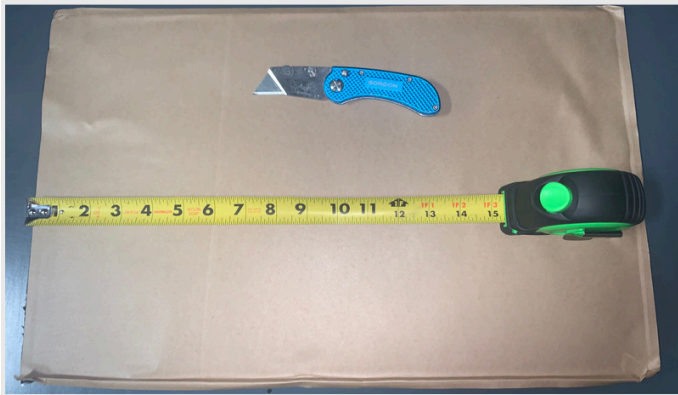
CAR AUDIO DOOR KIT - MEGA ZORBETM

SOUND REDUCTION AND DOOR ACOUSTICS INSTALLATION INSTRUCTIONS

- 2 Clean the bare sheet metal to **remove any dirt, oils, and waxy substances** for better material adherence.



- 3 Measure and cut Damplifier Pro™ mats with a utility knife to fit. Use a cardboard template if desired. We recommend **60% coverage** on outer skin and **40% coverage** on inner skin (avoid mechanical and/or electrical components).



(CONTINUED ON NEXT PAGE)

CAR AUDIO DOOR KIT - MEGA ZORBETM

SOUND REDUCTION AND DOOR ACOUSTICS INSTALLATION INSTRUCTIONS

- 4 Peel the adhesive backing from the Damplifier Pro™ Mats and **press them firmly** with as much pressure and coverage as practical across the **entire bare sheet metal**. Roll over the mats with the **wooden hand roller** to remove air bubbles and **bond** the material to the **substrate**.



- 5 Use **super glue** or **Double Sided Tape** to attach the Speaker Tweakers **directly behind** each speaker on top of the **Damplifier Pro™**.



(CONTINUED ON NEXT PAGE)

- 6 Measure and **cut** the Mega Zorbe™ into **smaller pieces** to fit the foam into the door cavity. The peel and stick backing is **extremely sticky**. We recommend **80%+ coverage** on outer skin on top of the Damplifier Pro™ sound deadening mats.



- 7 Reattach your door panels and **enjoy a quieter car!**



CAR DOOR MEGA ZORBE™ INSTALL GUIDE