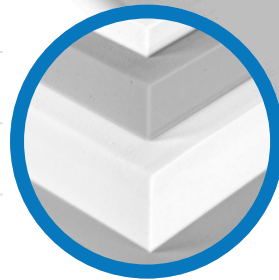


Mela Mute™ Acoustic Foam

Flat

SPEC SHEET

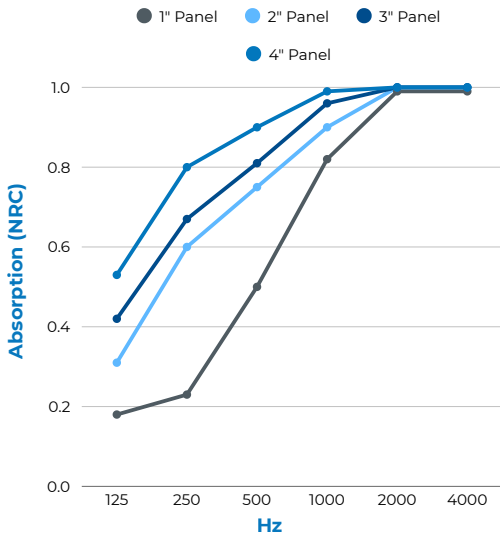
- ✓ Up to 4'x8' Available
- ✓ Controls Echo & Reverb
- ✓ Super Lightweight
- ✓ Class A Fire Rated
- ✓ Clean and Modern
- ✓ Non-Fibrous & No Itch



Material:	Open Cell Melamine Foam
Patterns:	Flat, Porous, Semi-Rigid, Non-Fibrous
Features:	Large Format Available, Absorbs Wide Range of Frequencies, Echo & Reverb Reduction, Decorative, Lightweight, Class A Fire Rated, Paintable, Non-Fibrous, Non-Toxic
Application:	Offices, Lobbies, Auditoriums, Theaters, Conference Rooms, Music Rooms, Universities, Schools, Houses of Worship, Multi-Purpose Rooms, Government & Municipal Facilities, Airports
Thickness:	1", 2", 3", 4"
Size:	24" x 48", 48" x 48", 48" x 96", Custom Up to 48" x 96" Available
Weight	Less Than 1lbs
Color:	White, Light Grey, Dark Grey
Temperature Rating:	-40°F to 350°F
Flammability:	ASTM E84, Class A Flame Spread: 10 Smoke Developed: 50
Installation:	Spray Adhesive

Noise Reduction Coefficient (NRC)

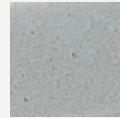
Size	Test Mount	125 Hz	250 Hz	500 Hz	1000 Hz	2000 Hz	4000 Hz	NRC
1" Mela Mute™ Flat Panel	A-Mount	0.18	0.23	0.50	0.82	0.99	0.99	0.65
2" Mela Mute™ Flat Panel	A-Mount	0.31	0.60	0.75	0.90	1.00	1.00	0.80
3" Mela Mute™ Flat Panel	A-Mount	0.42	0.67	0.81	0.96	1.00	1.00	0.85
4" Mela Mute™ Flat Panel	A-Mount	0.53	0.80	0.90	0.99	1.00	1.00	0.90



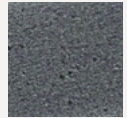
Color Options



White



Light Grey



Dark Grey

